

Grommets Ltd

1ST FOR RUBBER PRODUCTS • MANUFACTURERS & STOCKISTS

Unit 2, Hollands Lane, Henfield, West Sussex BN5 9QY
 Telephone: +44(0)1273 493355 & +44(0)1273 494400
 Fax: +44(0)1273 493388 • Email: sales@grommets.co.uk
 Web: www.grommets.co.uk

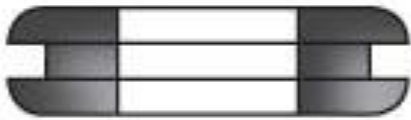


Grommets Ltd. a UK rubber moulding manufacturing company producing ...

- [Grommets](#) • [Plugs](#) • [Bungs](#) • [Feet](#) • [Washers](#) • [Ferrules](#) • [Grips](#)
 • [Cable Sleeves](#) • [Bushes](#) • [Cord Rings](#) • [Discs](#) • [Edging Strip](#)
 • [Custom Parts](#)

OPEN / CABLE TYPE RUBBER GROMMETS

Below is our standard range of *Rubber* Open Cable Grommets.
 Please contact our sales team for a quotation stating our part number:



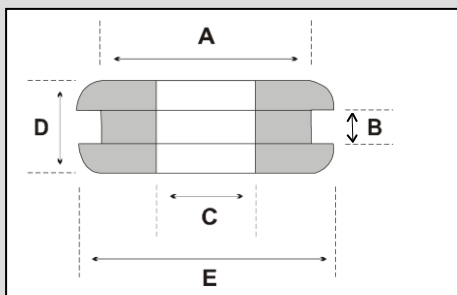
Email: sales@grommets.co.uk or Tel: **01273 494400**.

- Next Day Delivery On Items That Are In Stock
- Only 7 – 10 Days Lead Time On Made To Order Parts
- Many Different Types Of Rubber Available
- Just £30.00 Minimum Order Value (Applies To Stock Items Only)

USEFUL TIP: *Our Part Numbers Are Listed In Order Of Their Size*

Please Note: *Some parts may be subject to minimum order quantities should they not be in stock.*

FINDING THE RIGHT SIZE PART ...



1. Please use this diagram to help you measure the **a, b, c, d, e** dimensions of the Open/Cable type Grommet you require. Using these measurements as a guide you can then select a product code from the list that may be suitable for your requirements.

2. All our part numbers are made up of the three **a, b, c, d, e** dimensions of the part itself.

3. Alternatively please [click here](#) to see our 'Guide to Measurement' information sheet.

↓ Panel Hole Sizes: 4.8mm to 8.0mm ↓

OUR PART NUMBER	a (mm)	b (mm)	c (mm)	d (mm)	e (mm)
R48-08-28	4.8	0.8	2.8	5.1	8.6
R50-08-38S	5.0	0.8	3.8	8.8	9.6
R50-100-20S	5.0	10.0	2.0	14.7	7.2
R60-10-40	6.0	1.0	4.0	4.2	7.5
R60-20-30S	6.0	2.0	3.0	6.5	7.9
R60-25-42	6.0	2.5	4.2	9.5	9.8
R64-16-40	6.4	1.6	4.0	6.5	9.0
R64-16-40G	6.4	1.6	4.0	6.0	9.2
R64-24-40	6.4	2.4	4.0	7.6	8.9
R64-32-40	6.4	3.2	4.0	8.0	9.0
R79-08-48	7.9	0.8	4.8	4.4	10.8
R79-16-40	7.9	1.6	4.0	-	-
R79-16-56	7.9	1.6	5.6	4.7	10.8
R79-32-56	7.9	3.2	5.6	6.1	10.3
R79-38-48	7.9	3.8	4.8	8.7	11.4
R79-64-48H	7.9	6.4	4.8	8.9	10.9
R80-32-50S	8.0	3.2	5.0	10.3	10.5
R80-50-30	8.0	5.0	3.0	9.2	10.6

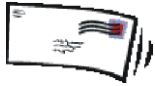
Please contact our sales team for a quotation stating our part number:



Tel: **01273 494400**

Tel: **01273 493355**

Fax: **01273 493388**



sales@grommets.co.uk



Need another type of part?

[Click here](#) to return to the main *Products* page ...

Or select one of the links below :

- [Grommets](#) • [Plugs](#)
- [Bungs](#) • [Feet](#)
- [Washers](#) • [Ferrules](#)
- [Grips](#) • [Cable Sleeves](#)
- [Bushes](#) • [Cord Rings](#)
- [Discs](#) • [Edging Strip](#)

Can't find what you're looking for?

[Click here](#) for information on custom made parts to meet your requirements.

↓ Panel Hole Sizes: 8.0mm to 12.7mm ↓					
OUR PART NUMBER	a (mm)	b (mm)	c (mm)	d (mm)	e (mm)
R80-60-30	8.0	6.0	3.0	9.9	10.8
R95-09-73	9.5	0.9	7.3	3.7	12.2
R95-16-48	9.5	1.6	4.8	6.6	12.5
R95-16-50	9.5	1.6	5.0	10.4	14.5
R95-16-56L	9.5	1.6	5.6	11.4	15.3
R95-16-64	9.5	1.6	6.4	6.9	13.9
R95-16-72	9.5	1.6	7.2	7.6	13.3
R95-24-48	9.5	2.4	4.8	-	-
R95-24-48L	9.5	2.4	4.8	12.5	17.7
R95-24-56L	9.5	2.4	5.6	-	-
R95-24-64	9.5	2.4	6.4	7.3	13.5
R95-24-64H	9.5	2.4	6.4	5.6	13.2
R95-32-48	9.5	3.2	4.8	8.2	12.3
R95-32-56L	9.5	3.2	5.6	-	-
R95-32-64	9.5	3.2	6.4	8.4	13.6
R95-40-48	9.5	4.0	4.8	9.7	12.2
R95-48-48	9.5	4.8	4.8	9.2	12.1
R95-51-64	9.5	5.1	6.4	9.8	13.5
R95-64-48	9.5	6.4	4.8	-	-
R103-12-71	10.3	1.2	7.1	6.6	14.5
R103-16-71	10.3	1.6	7.1	6.8	14.7
R103-32-71	10.3	3.2	7.1	9.0	14.5
R103-48-71	10.3	4.8	7.1	-	-
R110-17-70	11.0	1.7	7.0	4.5	14.6
R111-16-48	11.1	1.6	4.8	7.5	15.0
R111-16-64	11.1	1.6	6.4	8.1	15.1
R111-16-79	11.1	1.6	7.9	7.8	15.4
R111-16-95	11.1	1.6	9.5	7.5	15.4
R111-16-98	11.1	1.6	9.8	5.8	14.5
R111-32-48	11.1	3.2	4.8	9.0	15.0
R111-32-64	11.1	3.2	6.4	9.7	15.0
R111-32-79	11.1	3.2	7.9	9.0	15.5
R111-32-95	11.1	3.2	9.5	9.5	15.6
R111-38-79	11.1	3.8	7.9	-	-
R111-48-48	11.1	4.8	4.8	-	-
R111-48-64	11.1	4.8	6.4	-	-
R111-48-79	11.1	4.8	7.9	11.4	15.8
R111-48-95	11.1	4.8	9.5	10.4	15.5
R111-64-48	11.1	6.4	4.8	-	-
R111-64-79	11.1	6.4	7.9	12.0	15.3
R111-64-95	11.1	6.4	9.5	12.0	15.3
R120-12-79	12.0	1.2	7.9	11.6	16.0
R120-15-60	12.0	1.5	6.0	7.8	17.4
R120-16-79	12.0	1.6	7.9	-	-
R120-20-60	12.0	2.0	6.0	8.4	17.5
R120-24-79	12.0	2.4	7.9	8.7	16.0
R120-32-63	12.0	3.2	6.3	9.9	15.7
R120-35-60	12.0	3.5	6.0	9.2	17.1
R120-48-68	12.0	4.8	6.8	12.5	15.5
R121-15-98S	12.1	1.5	9.8	6.0	14.6
R127-16-64G	12.7	1.6	6.4	6.1	16.8
R127-16-76S	12.7	1.6	7.6	-	-
R127-16-95	12.7	1.6	9.5	6.4	15.6
R127-24-64G	12.7	2.4	6.4	-	-
R127-24-76	12.7	2.4	7.6	-	-

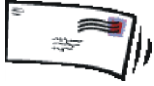
Please contact our sales team for a quotation stating our part number:



Tel: **01273 494400**

Tel: **01273 493355**

Fax: **01273 493388**

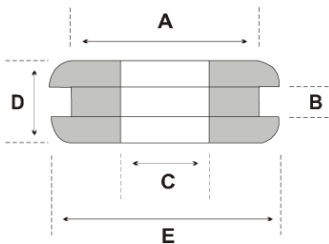


sales@grommets.co.uk



USEFUL TIP: Our Open/Cable type Grommets are listed in order of their panel hole size starting with the smallest.

Use your 'a' dimension to find a suitable part in our list, as per the drawing below ...



↓ Panel Hole Sizes: 12.7mm to 19.0mm ↓

OUR PART NUMBER	a (mm)	b (mm)	c (mm)	d (mm)	e (mm)
R127-24-95	12.7	2.4	9.5	-	-
R127-32-64G	12.7	3.2	6.4	7.4	16.4
R127-32-95	12.7	3.2	9.5	9.7	16.9
R127-48-76	12.7	4.8	7.6	10.3	18.4
R127-48-95	12.7	4.8	9.5	10.0	16.8
R127-50-64G	12.7	5.0	6.4	11.0	16.9
R127-64-95	12.7	6.4	9.5	12.8	17.3
R130-11-90A	13.0	1.1	9.0	5.6	19.8
R130-20-90/70S	13.0	2.0	9.0-7.0	17.4	16.6
R135-16-111	13.5	1.6	11.1	8.5	18.7
R135-32-111	13.5	3.2	11.1	9.9	18.9
R135-48-95	13.5	4.8	9.5	11.2	16.4
R140-40-70	14.0	4.0	7.0	10.9	24.9
R140-150-80	14.0	15.0	8.0	21.5	15.7
R143-16-79	14.3	1.6	7.9	11.6	20.9
R143-30-80	14.3	3.0	8.0	9.7	20.1
R143-32-32	14.3	3.2	3.2	6.3	18.5
R143-48-95	14.3	4.8	9.5	13.5	18.5
R143-100-95	14.3	10.0	9.5	18.2	18.5
R143-150-80	14.3	15.0	8.0	23.5	15.6
R145-150-100	14.5	15.0	10.0	19.6	19.5
R150-15-95	15.0	1.5	9.5	8.4	21.0
R150-30-95	15.0	3.0	9.5	9.7	20.8
R150-40-70	15.0	4.0	7.0	10.9	24.8
R151-16-71	15.1	1.6	7.1	7.4	18.6
R151-32-71	15.1	3.2	7.1	-	-
R151-48-71	15.1	4.8	7.1	-	-
R159-32-79	15.9	3.2	7.9	7.5	23.8
R159-64-79	15.9	6.4	7.9	10.6	24.6
R160-12-79	16.0	1.2	7.9	5.0	23.9
R160-16-79	16.0	1.6	7.9	5.8	23.8
R160-25-35S	16.0	2.5	3.5	17.5	20.0
R160-32-79	16.0	3.2	7.9	7.2	24.1
R160-40-70	16.0	4.0	7.0	10.9	25.1
R160-100-95	16.0	10.0	9.5	17.0	20.7
R170-16-95	17.0	1.6	9.5	8.7	19.4
R175-10-127	17.5	1.0	12.7	8.7	22.0
R175-12-79	17.5	1.2	7.9	5.0	23.9
R175-15-127	17.5	1.5	12.7	6.4	21.7
R175-16-79	17.5	1.6	7.9	6.4	26.2
R175-16-143	17.5	1.6	14.3	4.7	21.5
R175-20-120	17.5	2.0	12.0	-	-
R175-30-127	17.5	3.0	12.7	10.0	22.0
R175-32-79	17.5	3.2	7.9	7.5	24.4
R175-32-143	17.5	3.2	14.3	8.8	20.4
R175-40-143	17.5	4.0	14.3	8.9	21.1
R175-48-79	17.5	4.8	7.9	-	-
R175-48-143	17.5	4.8	14.3	-	-
R175-51-127	17.5	5.1	12.7	11.7	21.9
R180-20-120	18.0	2.0	12.0	8.1	23.2
R180-40-70	18.0	4.0	7.0	10.8	24.5
R180-40-120	18.0	4.0	12.0	-	-
R180-65-100S	18.0	6.5	10.0	19.1	29.9
R180-127-127	18.0	12.7	12.7	20.3	21.7
R190-16-143	19.0	1.6	14.3	-	-

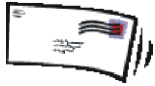
Please contact our sales team for a quotation stating our part number:



Tel: **01273 494400**

Tel: **01273 493355**

Fax: **01273 493388**



sales@grommets.co.uk



Need another type of part?

[Click here](#) to return to the main *Products* page ...

Or select one of the links below :

[Grommets](#) • [Plugs](#)
[Bungs](#) • [Feet](#)
[Washers](#) • [Ferrules](#)
[Grips](#) • [Cable Sleeves](#)
[Bushes](#) • [Cord Rings](#)
[Discs](#) • [Edging Strip](#)

Can't find what you're looking for?

[Click here](#) for information on custom made parts to meet your requirements.

↓ **Panel Hole Sizes: 19.0mm to 30.0mm** ↓

OUR PART NUMBER	a (mm)	b (mm)	c (mm)	d (mm)	e (mm)
R190-20-120	19.0	2.0	12.0	-	-
R190-32-143	19.0	3.2	14.3	9.6	24.9
R190-40-70	19.0	4.0	7.0	10.9	24.7
R190-40-120	19.0	4.0	12.0	-	-
R190-48-143	19.0	4.8	14.3	11.3	24.6
R190-55-140	19.0	5.5	14.0	14.5	25.1
R190-64-143	19.0	6.4	14.3	12.9	24.9
R191-64-143	19.1	6.4	14.3	13.1	25.8
R200-16-150	20.0	1.6	15.0	5.8	24.0
R200-16-159	20.0	1.6	15.9	6.9	23.6
R200-24-150	20.0	2.4	15.0	6.8	24.0
R200-30-127	20.0	3.0	12.7	9.3	28.1
R200-32-150	20.0	3.2	15.0	7.0	23.8
R200-32-159	20.0	3.2	15.9	8.6	23.5
R200-40-70	20.0	4.0	7.0	11.0	25.0
R200-40-120	20.0	4.0	12.0	10.0	23.9
R200-50-160	20.0	5.0	16.0	10.8	25.6
R200-60-120	20.0	6.0	12.0	11.8	24.1
R206-24-159	20.6	2.4	15.9	8.9	25.6
R206-30-127	20.6	3.0	12.7	9.4	27.1
R222-10-64C	22.2	1.0	6.4	8.8	34.4
R222-16-30	22.2	1.6	3.0	-	-
R222-32-30	22.2	3.2	3.0	-	-
R222-80-111	22.2	8.0	11.1	14.3	28.3
R222-95-111	22.2	9.5	11.1	15.6	28.6
R230-12-127	23.0	1.2	12.7	4.9	25.8
R230-30-161	23.0	3.0	16.1	9.8	29.6
R250-30-90	25.0	3.0	9.0	7.1	34.7
R254-12-190	25.4	1.2	19.0	8.9	30.9
R254-16-30	25.4	1.6	3.0	8.0	31.6
R254-16-80C	25.4	1.6	8.0	9.0	34.4
R254-16-175	25.4	1.6	17.5	8.2	32.1
R254-16-185	25.4	1.6	18.5	7.9	31.4
R254-16-191	25.4	1.6	19.1	7.5	29.4
R254-16-200	25.4	1.6	20.0	8.4	31.1
R254-20-190	25.4	2.0	19.0	8.2	31.1
R254-30-60L	25.4	3.0	6.0	8.8	29.5
R254-30-63	25.4	3.0	6.3	7.7	31.6
R254-30-210	25.4	3.0	21.0	10.5	30.9
R254-32-30	25.4	3.2	3.0	-	-
R254-32-95	25.4	3.2	9.5	7.8	31.7
R254-32-200	25.4	3.2	20.0	9.9	29.9
R254-32-206	25.4	3.2	20.6	10.1	31.3
R254-50-220	25.4	5.0	22.0	11.0	33.4
R254-64-191	25.4	6.4	19.1	12.6	29.6
R254-79-50	25.4	7.9	5.0	14.7	31.5
R254-80-111	25.4	8.0	11.1	12.5	27.8
R254-87-159	25.4	8.7	15.9	16.5	33.0
R270-08-206	27.0	0.8	20.6	7.5	31.5
R270-12-210	27.0	1.2	21.0	8.4	31.3
R270-30-210	27.0	3.0	21.0	-	-
R280-50-220	28.0	5.0	22.0	11.6	33.1
R285-50-200S	28.5	5.0	20.0	15.4	40.1
R285-191-174	28.5	19.1	17.4	25.3	37.6
R290-50-160	29.0	5.0	16.0	-	-

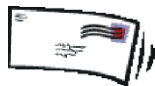
Please contact our sales team for a quotation stating our part number:



Tel: **01273 494400**

Tel: **01273 493355**

Fax: **01273 493388**

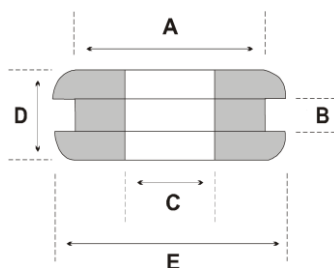


sales@grommets.co.uk



USEFUL TIP: Our Open/Cable type Grommets are listed in order of their panel hole size starting with the smallest.

Use your 'a' dimension to find a suitable part in our list, as per the drawing below ...



↓ Panel Hole Sizes: 31.0mm to 50.8mm ↓

OUR PART NUMBER	a (mm)	b (mm)	c (mm)	d (mm)	e (mm)
R300-100-170	30.0	10.0	17.0	20.1	39.2
R310-40-120	31.0	4.0	12.0	14.2	43.9
R318-16-80C	31.8	1.6	8.0	10.7	40.9
R318-32-254	31.8	3.2	25.4	11.1	40.5
R320-15-254	32.0	1.5	25.4	8.1	36.7
R320-24-254	32.0	2.4	25.4	11.9	44.1
R320-30-254	32.0	3.0	25.4	9.4	37.1
R320-32-254	32.0	3.2	25.4	12.5	43.7
R320-40-120	32.0	4.0	12.0	14.5	43.8
R320-40-254	32.0	4.0	25.4	14.3	42.4
R320-65-200	32.0	6.5	20.0	-	-
R320-65-254	32.0	6.5	25.4	16.3	43.7
R345-20-318	34.5	2.0	31.8	10.7	46.9
R345-40-318	34.5	4.0	31.8	12.8	46.4
R345-60-285	34.5	6.0	28.5	12.8	40.2
R350-10-160	35.0	1.0	16.0	-	-
R350-15-290	35.0	1.5	29.0	7.7	47.7
R350-16-250	35.0	1.6	25.0	10.7	43.9
R350-32-95	35.0	3.2	9.5	9.6	41.0
R350-32-159	35.0	3.2	15.9	9.5	40.7
R350-32-250	35.0	3.2	25.0	13.4	43.7
R350-60-288	35.0	6.0	28.8	-	-
R350-80-200	35.0	8.0	20.0	-	-
R380-20-30S	38.0	2.0	3.0	26.5	44.9
R381-16-60C	38.1	1.6	6.0	-	-
R381-16-90C	38.1	1.6	9.0	10.4	47.5
R381-20-318	38.1	2.0	31.8	10.7	46.4
R381-40-318	38.1	4.0	31.8	12.9	46.4
R381-50-318	38.1	5.0	31.8	13.8	46.6
R381-70-318	38.1	7.0	31.8	15.0	46.8
R381-100-318	38.1	10.0	31.8	17.5	47.0
R381-120-318	38.1	12.0	31.8	20.1	47.1
R400-10-240	40.0	1.0	24.0	8.2	49.2
R400-16-345	40.0	1.6	34.5	-	-
R400-20-345	40.0	2.0	34.5	10.1	47.9
R400-50-345	40.0	5.0	34.5	13.0	47.9
R413-80-350	41.3	8.0	35.0	16.2	49.8
R420-30-340	42.0	3.0	34.0	9.8	47.0
R420-45-381	42.0	4.5	38.1	11.9	55.5
R420-60-350	42.0	6.0	35.0	13.9	50.5
R444-105-381	44.4	10.5	38.1	16.8	51.9
R445-16-381	44.5	1.6	38.1	8.1	47.5
R445-32-381	44.5	3.2	38.1	10.5	48.4
R445-100-380	44.5	10.0	38.0	16.2	52.9
R450-30-175	45.0	3.0	17.5	11.8	56.5
R460-40-400	46.0	4.0	40.0	13.5	53.0
R477-127-445	47.7	12.7	44.5	-	-
R480-10-350	48.0	1.0	35.0	-	-
R500-100-430	50.0	10.0	43.0	-	-
R500-150-430	50.0	15.0	43.0	20.5	60.0
R500-230-430	50.0	23.0	43.0	30.1	61.3
R508-16-413	50.8	1.6	41.3	11.9	59.1
R508-16-444	50.8	1.6	44.4	11.6	58.0
R508-32-413	50.8	3.2	41.3	-	-

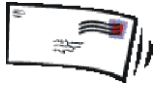
Please contact our sales team for a quotation stating our part number:



Tel: **01273 494400**

Tel: **01273 493355**

Fax: **01273 493388**



sales@grommets.co.uk



Need another type of part?

[Click here](#) to return to the main *Products* page ...

Or select one of the links below :

[Grommets](#) • [Plugs](#)
[Bungs](#) • [Feet](#)
[Washers](#) • [Ferrules](#)
[Grips](#) • [Cable Sleeves](#)
[Bushes](#) • [Cord Rings](#)
[Discs](#) • [Edging Strip](#)

Can't find what you're looking for?

[Click here](#) for information on custom made parts to meet your requirements.

↓ **Panel Hole Sizes: 50.8mm to 135.0mm** ↓

OUR PART NUMBER	a (mm)	b (mm)	c (mm)	d (mm)	e (mm)
R508-32-444	50.8	3.2	44.4	12.8	58.9
R508-40-400	50.8	4.0	40.0	13.6	54.6
R508-48-444	50.8	4.8	44.4	-	-
R550-20-508	55.0	2.0	50.8	-	-
R550-40-508	55.0	4.0	50.8	-	-
R550-60-508	55.0	6.0	50.8	-	-
R560-80-450	56.0	8.0	45.0	-	-
R572-16-508	57.2	1.6	50.8	12.5	65.7
R572-32-508	57.2	3.2	50.8	13.7	65.9
R572-111-508	57.2	11.1	50.8	21.7	67.6
R635-32-540	63.5	3.2	54.0	10.9	73.4
R650-90-500	65.0	9.0	50.0	-	-
R700-30-635	70.0	3.0	63.5	10.3	78.9
R762-15-603	76.2	1.5	60.3	7.2	82.4
R762-40-603	76.2	4.0	60.3	9.0	84.6
R762-64-603	76.2	6.4	60.3	11.0	82.0
R780-10-675	78.0	1.0	67.5	-	-
R780-12-680	78.0	1.2	68.0	7.5	87.6
R800-32-700	80.0	3.2	70.0	-	-
R800-80-660	80.0	8.0	66.0	-	-
R826-32-762	82.6	3.2	76.2	9.6	87.2
R860-100-760S	86.0	10.0	76.0	28.5	107.5
R890-64-570	89.0	6.4	57.0	17.9	101.7
R1000-10-950	100.0	1.0	95.0	-	-
R1000-320-890H	100.0	32.0	89.0	40.3	134.8
R1140-95-890	114.0	9.5	89.0	-	-
R1150-12-950	115.0	1.2	95.0	-	-
R1150-60-1100	115.0	6.0	110.0	17.5	145.0
R1200-60-1100	120.0	6.0	110.0	-	-
R1300-15-100S	130.0	1.5	10.0	12.4	143.8
R1300-30-100S	130.0	3.0	10.0	-	-
R1350-20-1250	135.0	2.0	125.0	9.9	138.3

• END OF LIST •